

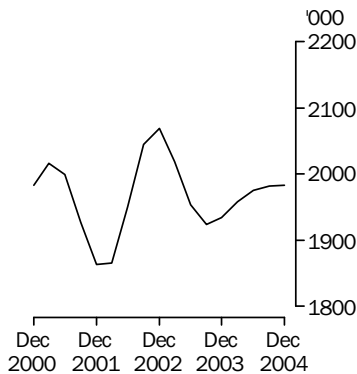
**LIVESTOCK PRODUCTS**

AUSTRALIA

EMBARGO: 11.30AM (CANBERRA TIME) MON 14 FEB 2005

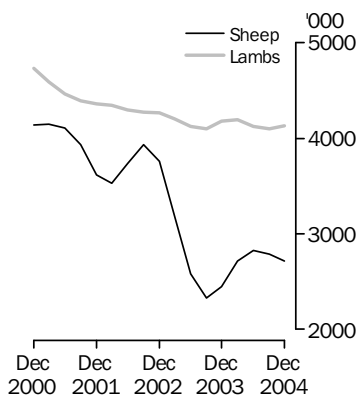
**Cattle slaughtering**

Excluding calves  
Trend



**Sheep and lamb slaughtering**

Trend



**KEY FIGURES**

**TREND ESTIMATES**

	Dec Qtr 2003	Sep Qtr 2004	Dec Qtr 2004
	'000	'000	'000
Number slaughtered			
Cattle	1 934.2	1 981.9	1 982.8
Calves	274.8	223.6	220.1
Sheep	2 447.5	2 789.0	2 715.0
Lambs	4 181.0	4 097.3	4 135.7
Pigs	1 401.1	1 346.2	1 327.0
Chickens	105 315.2	109 705.9	112 911.8

	Dec Qtr 2003	Sep Qtr 2004	Dec Qtr 2004
	tonnes	tonnes	tonnes
Meat produced			
Beef	493 555	525 501	527 871
Veal	9 345	7 639	7 468
Mutton	52 100	57 808	56 279
Lamb	86 137	83 101	82 856
Pig meat	101 501	98 053	97 295
Chicken meat	170 753	183 062	187 640
Wool receivals	115 205	119 067	115 519

	Sep Qtr 2003	Jun Qtr 2004	Sep Qtr 2004
	ML	ML	ML
Whole milk intake by factories	2 474	2 538	2 526

**KEY POINTS**

**TREND ESTIMATES**

- In December quarter 2004, the trend estimate for the number of cattle slaughtered remained steady at 2.0 million.
- The trend estimate for the number of calves slaughtered in December quarter 2004 fell by 2% to 220,000. This was the lowest estimate since the series began in September quarter 1979.
- In December quarter 2004, the trend estimate for the number of pigs slaughtered fell to 1.3 million. This was the seventh consecutive quarterly decrease and the lowest quarterly trend estimate since September quarter 2001.
- The trend estimate for chicken meat production rose by 3% in December quarter 2004, to a record 188,000 tonnes.

**INQUIRIES**

- For further information about these and related statistics, contact the National Information and Referral Service on 1300 135 070 or Frank Costin on Hobart (03) 6222 5838.

# NOTES

## FORTHCOMING ISSUES

*ISSUE (Quarter)*

*RELEASE DATE*

March 2005

13 May 2005

June 2005

12 August 2005

.....

## CHANGES IN THIS ISSUE

There are no changes in this issue.

## FORTHCOMING CHANGES

There are no forthcoming changes.

.....

## ABBREVIATIONS

ABS Australian Bureau of Statistics

ML megalitre

t tonne

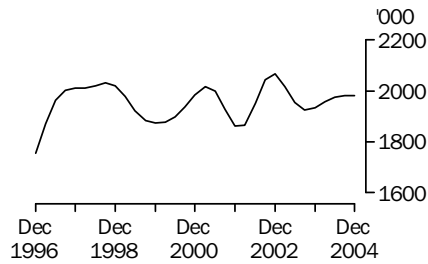
UHT ultra heat treated

Dennis Trewin

Australian Statistician

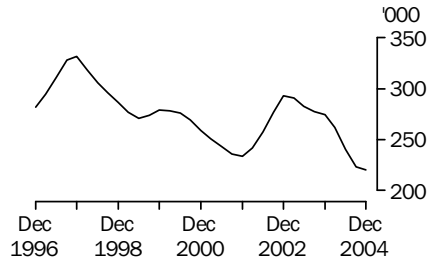
## LIVESTOCK SLAUGHTERED TREND

### CATTLE (EXCLUDING CALVES)



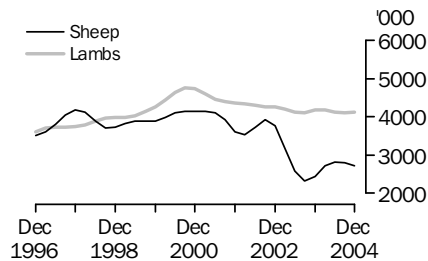
The trend estimate for the number of cattle slaughtered in December quarter 2004 remained steady at 2.0 million.

### CALVES



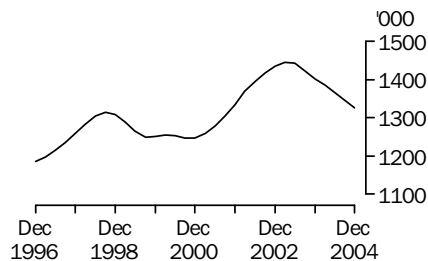
The trend estimate for the number of calves slaughtered in December quarter 2004 fell by 2% to 220,000. This was the lowest estimate since the series began in September quarter 1979.

### SHEEP AND LAMBS



In December quarter 2004, the trend estimate for the number of sheep slaughtered fell by 3% to 2.7 million. The number of lambs slaughtered rose slightly to 4.1 million.

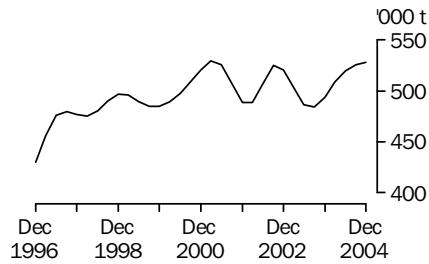
### PIGS



In December quarter 2004, the trend estimate for the number of pigs slaughtered fell to 1.3 million. This was the seventh consecutive quarterly decrease and the lowest quarterly trend estimate since September quarter 2001.

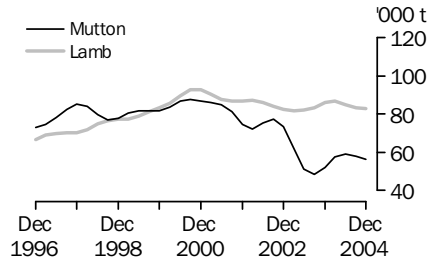
## MEAT PRODUCTION TREND

### BEEF



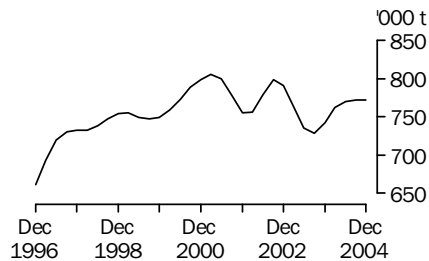
In December quarter 2004, the trend estimate for beef production remained steady at 528,000 tonnes.

### MUTTON AND LAMB



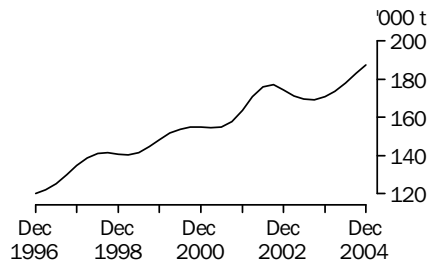
In December quarter 2004, the trend estimate for mutton production fell by 3% to 56,300 tonnes, and the estimate for lamb production fell slightly to 82,900 tonnes.

### TOTAL RED MEAT



The trend estimate for red meat production remained steady at 772,000 tonnes in December quarter 2004. A small increase in beef production was offset by small decreases in mutton, lamb and pig meat production.

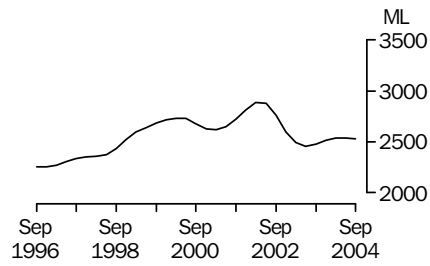
### CHICKEN MEAT



The trend estimate for chicken meat production rose by 3% in December quarter 2004, to a record 188,000 tonnes.

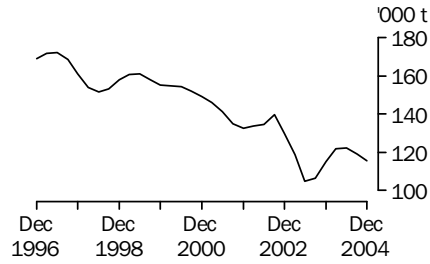
## LIVESTOCK PRODUCTS TREND

### WHOLE MILK INTAKE BY FACTORIES



The trend estimate for whole milk intake by factories in September quarter 2004 remained steady at 2.5 billion litres.

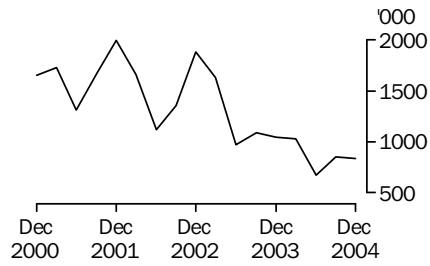
### BROKERS AND DEALERS RECEIVALS OF TAXABLE WOOL



The trend estimate for wool receivals by brokers and dealers in December quarter 2004 fell by 3% to 116,000 tonnes.

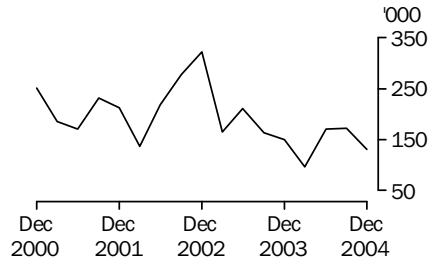
## LIVESTOCK EXPORTS ORIGINAL

### EXPORTS OF LIVE SHEEP



Live sheep exports fell slightly to 840,000 in December quarter 2004. A 6% fall in unit value (down to \$64.24) saw the gross value of live sheep exports fall to \$53.9 million.

### EXPORTS OF LIVE CATTLE



In December quarter 2004, live cattle exports fell by 24% to 130,000. While higher unit values (up 11% to \$725.45) partly offset the reduction in numbers exported, the gross value of live cattle exports fell by 16% to \$94.4 million.

## LIST OF TABLES

page

### OVERVIEW

<b>1</b>	Livestock slaughtered, Australia	9
<b>2</b>	Livestock products, Australia	10

### LIVESTOCK SLAUGHTERINGS

<b>3</b>	Number of livestock slaughtered, bulls, bullocks and steers, by state	11
<b>4</b>	Number of livestock slaughtered, cows and heifers, by state	12
<b>5</b>	Number of livestock slaughtered, total cattle (excluding calves), by state	13
<b>6</b>	Number of livestock slaughtered, calves, by state	14
<b>7</b>	Number of livestock slaughtered, sheep, by state	15
<b>8</b>	Number of livestock slaughtered, lambs, by state	16
<b>9</b>	Number of livestock slaughtered, pigs, by state	17
<b>10</b>	Number of chickens slaughtered, by state	18
<b>11</b>	Number of livestock slaughtered, financial year, by state	19

### MEAT PRODUCED

<b>12</b>	Red meat produced, beef, by state	20
<b>13</b>	Red meat produced, veal, by state	21
<b>14</b>	Red meat produced, mutton, by state	22
<b>15</b>	Red meat produced, lamb, by state	23
<b>16</b>	Red meat produced, pig meat, by state	24
<b>17</b>	Total red meat produced, by state	25
<b>18</b>	Chicken meat produced, by state	26
<b>19</b>	Meat produced, financial year, by state	27

### EXPORTS OF MEAT AND LIVE ANIMALS

<b>20</b>	Exports of fresh, frozen and processed meat, Australia	28
<b>21</b>	Exports of live sheep and cattle, Australia	29

### LIVESTOCK PRODUCTS

<b>22</b>	Whole milk intake by factories, by state	30
<b>23</b>	Market milk sales by factories, by state	31
<b>24</b>	Brokers and dealers receivals of taxable wool, by state	32
<b>25</b>	Livestock products, financial year, by state	33





## LIVESTOCK SLAUGHTERED, Australia(a): All Series

Quarter	Bulls, bullocks and steers	Cows and heifers	Total cattle (excluding calves)	Calves	Sheep	Lambs	Pigs	Chickens
	'000	'000	'000	'000	'000	'000	'000	'000
ORIGINAL								
<b>2003</b>								
September	951.2	997.9	1 949.1	480.1	1 899.9	3 667.9	1 437.9	105 746.9
December	1 017.9	916.3	1 934.2	201.5	2 736.3	4 371.5	1 376.9	107 480.2
<b>2004</b>								
March	950.4	898.4	1 848.8	126.1	3 076.2	4 285.5	1 352.3	106 367.5
June	1 016.3	1 004.5	2 020.8	218.1	2 708.4	4 236.9	1 424.1	104 147.4
September	1 135.9	953.4	2 089.3	413.9	2 345.3	3 597.7	1 360.1	106 408.0
December	1 108.6	829.4	1 937.9	151.8	3 014.7	4 554.6	1 303.7	118 723.1
SEASONALLY ADJUSTED								
<b>2003</b>								
September	916.9	971.5	1 888.4	249.2	2 183.8	3 884.1	1 417.5	107 675.0
December	986.6	980.5	1 967.1	306.0	2 495.3	4 189.6	1 397.5	103 763.1
<b>2004</b>								
March	1 011.5	948.3	1 959.8	256.8	2 724.0	4 253.6	1 391.2	105 755.4
June	1 024.6	921.0	1 945.6	235.7	2 994.2	4 211.1	1 367.2	105 559.0
September	1 096.4	927.8	2 024.2	215.1	2 668.7	3 824.8	1 341.4	108 540.3
December	1 073.2	887.2	1 960.4	229.9	2 714.1	4 352.1	1 329.7	114 806.1
TREND								
<b>2003</b>								
September	945.1	978.3	1 923.4	277.6	2 327.8	4 102.4	1 424.1	105 053.3
December	966.4	967.8	1 934.2	274.8	2 447.5	4 181.0	1 401.1	105 315.2
<b>2004</b>								
March	1 007.3	950.6	1 957.9	262.3	2 714.2	4 192.2	1 385.3	105 234.5
June	1 043.5	931.9	1 975.4	240.2	2 823.5	4 128.0	1 366.5	106 699.1
September	1 068.8	913.1	1 981.9	223.6	2 789.0	4 097.3	1 346.2	109 705.9
December	1 085.0	897.8	1 982.8	220.1	2 715.0	4 135.7	1 327.0	112 911.8

(a) For more information refer to paragraphs 5 and 7 to 9 of the Explanatory Notes.

## LIVESTOCK PRODUCTS, Australia(a): All Series

Quarter	RED MEAT						Chicken meat	Whole milk intake by factories	Brokers and dealers receipts of taxable wool
	Beef	Veal	Mutton	Lamb	Pig meat	Total red meat			
	tonnes	tonnes	tonnes	tonnes	tonnes	tonnes	tonnes	ML	tonnes
ORIGINAL									
<b>2003</b>									
September	489 378	12 683	39 847	73 146	106 120	721 174	169 979	2 370	121 566
December	497 502	7 945	60 488	90 068	98 551	754 555	175 765	3 431	135 827
<b>2004</b>									
March	483 454	6 644	64 694	89 804	96 531	741 128	172 068	2 442	117 290
June	527 514	7 821	54 684	88 430	104 697	783 145	175 791	1 832	92 900
September	551 747	11 246	48 240	70 757	99 416	781 405	179 282	2 369	127 458
December	519 707	5 851	65 349	91 169	94 180	776 254	195 330	nya	137 053
SEASONALLY ADJUSTED									
<b>2003</b>									
September	477 890	8 305	45 369	79 198	103 608	714 370	171 803	2 487	108 651
December	497 680	10 542	53 428	86 023	100 886	748 559	169 784	2 502	114 314
<b>2004</b>									
March	512 403	8 769	58 224	88 104	100 487	767 987	172 917	2 549	122 236
June	510 681	8 134	62 047	87 317	99 224	767 403	177 973	2 560	128 027
September	538 926	7 368	54 665	76 986	97 365	775 310	181 403	2 498	113 757
December	519 694	7 756	57 093	86 929	97 759	769 231	189 250	nya	115 917
TREND									
<b>2003</b>									
September	483 989	9 355	48 280	83 298	103 896	728 818	169 172	2 474	106 432
December	493 555	9 345	52 100	86 137	101 501	742 638	170 753	2 517	115 205
<b>2004</b>									
March	508 349	9 023	57 545	86 822	100 086	761 825	173 784	2 537	122 002
June	519 497	8 256	58 979	84 862	98 991	770 585	177 961	2 538	122 188
September	525 501	7 639	57 808	83 101	98 053	772 102	183 062	2 526	119 067
December	527 871	7 468	56 279	82 856	97 295	771 769	187 640	nya	115 519

nya not yet available

(a) For more information refer to paragraphs 5 to 9 and 13 to 15 of the Explanatory Notes.

## NUMBER OF LIVESTOCK SLAUGHTERED (a), Bulls, Bullocks and Steers: All Series

Quarter	New South Wales	Victoria	Queensland	South Australia	Western Australia	Tasmania	Australia
	'000	'000	'000	'000	'000	'000	'000
ORIGINAL							
<b>2003</b>							
September	180.7	137.5	544.7	34.3	40.6	13.1	<b>951.2</b>
December	201.6	144.8	528.0	54.5	63.3	25.4	<b>1 017.9</b>
<b>2004</b>							
March	208.7	170.5	442.0	48.1	50.6	30.3	<b>950.4</b>
June	203.0	160.8	535.1	41.6	46.0	29.5	<b>1 016.3</b>
September	235.4	137.2	653.8	34.9	50.3	24.0	<b>1 135.9</b>
December	218.3	159.3	584.0	56.3	61.8	28.5	<b>1 108.6</b>
SEASONALLY ADJUSTED							
<b>2003</b>							
September	180.5	155.6	479.0	41.7	43.4	15.4	<b>916.9</b>
December	201.5	137.2	519.6	49.4	52.6	26.5	<b>986.6</b>
<b>2004</b>							
March	203.4	155.5	527.0	43.5	50.6	25.5	<b>1 011.5</b>
June	208.4	165.8	531.3	43.0	51.8	29.4	<b>1 024.6</b>
September	236.0	156.3	574.7	42.7	55.1	28.2	<b>1 096.4</b>
December	217.3	152.2	573.9	50.8	51.0	29.8	<b>1 073.2</b>
TREND							
<b>2003</b>							
September	204.7	154.9	487.5	43.7	45.2	20.1	<b>945.1</b>
December	197.9	154.4	506.5	45.3	48.9	23.5	<b>966.4</b>
<b>2004</b>							
March	203.7	157.3	526.5	44.7	52.0	26.8	<b>1 007.3</b>
June	214.6	159.4	544.1	43.7	52.7	28.3	<b>1 043.5</b>
September	222.2	158.1	561.4	44.8	52.8	28.9	<b>1 068.8</b>
December	226.6	154.6	576.7	47.6	52.8	29.6	<b>1 085.0</b>

(a) For more information refer to paragraphs 4, 5 and 7 of the Explanatory Notes.

## NUMBER OF LIVESTOCK SLAUGHTERED(a), Cows and Heifers: All Series

Quarter	New South Wales	Victoria	Queensland	South Australia	Western Australia	Tasmania	Australia
	'000	'000	'000	'000	'000	'000	'000
ORIGINAL							
<b>2003</b>							
September	219.2	220.3	435.8	34.3	61.7	25.6	<b>997.9</b>
December	218.1	233.5	336.6	41.1	62.2	23.7	<b>916.3</b>
<b>2004</b>							
March	190.5	243.4	318.1	45.4	71.2	28.8	<b>898.4</b>
June	194.3	245.9	423.9	43.6	67.5	28.4	<b>1 004.5</b>
September	206.5	238.0	377.2	37.0	71.6	22.1	<b>953.4</b>
December	195.8	222.2	281.1	42.6	64.9	21.8	<b>829.4</b>
SEASONALLY ADJUSTED							
<b>2003</b>							
September	221.3	225.6	393.4	37.4	62.1	31.5	<b>971.5</b>
December	221.5	231.1	382.7	41.2	61.3	25.5	<b>980.5</b>
<b>2004</b>							
March	193.0	240.4	380.1	43.1	67.1	25.8	<b>948.3</b>
June	184.4	246.1	360.6	42.3	72.4	24.2	<b>921.0</b>
September	212.2	243.1	340.3	40.5	72.1	27.9	<b>927.8</b>
December	196.4	220.1	319.8	42.4	64.1	23.9	<b>887.2</b>
TREND							
<b>2003</b>							
September	222.4	234.8	386.1	41.8	61.9	29.9	<b>978.3</b>
December	210.0	233.1	387.2	40.9	63.0	27.1	<b>967.8</b>
<b>2004</b>							
March	199.7	238.9	377.0	41.5	67.3	25.5	<b>950.6</b>
June	195.5	243.0	360.0	42.2	70.3	25.4	<b>931.9</b>
September	197.9	237.9	340.9	41.7	70.2	25.7	<b>913.1</b>
December	202.6	229.2	322.5	41.5	67.8	25.3	<b>897.8</b>

(a) For more information refer to paragraphs 4, 5 and 7 of the Explanatory Notes.

NUMBER OF LIVESTOCK SLAUGHTERED(a), Total Cattle (excluding Calves): All Series
 

---

	New South Wales	Victoria	Queensland	South Australia	Western Australia	Tasmania	Australia
Quarter	'000	'000	'000	'000	'000	'000	'000
ORIGINAL							
<b>2003</b>							
September	399.9	357.8	980.5	68.6	102.2	38.7	<b>1 949.1</b>
December	419.7	378.3	864.6	95.6	125.5	49.1	<b>1 934.2</b>
<b>2004</b>							
March	399.2	413.9	760.1	93.5	121.7	59.0	<b>1 848.8</b>
June	397.3	406.7	959.0	85.2	113.4	57.9	<b>2 020.8</b>
September	441.8	375.1	1 030.9	72.0	122.0	46.1	<b>2 089.3</b>
December	414.1	381.6	865.1	98.9	126.6	50.3	<b>1 937.9</b>
SEASONALLY ADJUSTED							
<b>2003</b>							
September	401.7	381.2	872.3	79.0	105.5	46.9	<b>1 888.4</b>
December	423.0	368.4	902.4	90.5	113.9	52.0	<b>1 967.1</b>
<b>2004</b>							
March	396.4	395.9	907.1	86.6	117.7	51.3	<b>1 959.8</b>
June	392.8	411.9	891.9	85.3	124.3	53.6	<b>1 945.6</b>
September	448.3	399.4	915.0	83.2	127.2	56.1	<b>2 024.2</b>
December	413.6	372.3	893.7	93.2	115.1	53.7	<b>1 960.4</b>
TREND							
<b>2003</b>							
September	427.1	389.7	873.6	85.5	107.1	49.9	<b>1 923.4</b>
December	407.8	387.5	893.7	86.2	111.9	50.6	<b>1 934.2</b>
<b>2004</b>							
March	403.4	396.2	903.5	86.2	119.3	52.3	<b>1 957.9</b>
June	410.1	402.4	904.1	85.9	123.1	53.7	<b>1 975.4</b>
September	420.1	396.0	902.3	86.5	123.0	54.6	<b>1 981.9</b>
December	429.2	383.8	899.2	89.1	120.6	55.0	<b>1 982.8</b>

(a) For more information refer to paragraphs 4, 5 and 7 of the Explanatory Notes.

## NUMBER OF LIVESTOCK SLAUGHTERED (a), Calves: All Series

Quarter	New South Wales	Victoria	Queensland	South Australia	Western Australia	Tasmania	Australia
	'000	'000	'000	'000	'000	'000	'000
ORIGINAL							
<b>2003</b>							
September	56.4	362.9	23.3	2.3	1.3	33.7	<b>480.1</b>
December	53.7	115.3	21.3	1.3	1.1	8.7	<b>201.5</b>
<b>2004</b>							
March	56.6	45.5	19.5	1.7	1.3	1.3	<b>126.1</b>
June	55.2	135.5	20.6	2.0	1.1	3.6	<b>218.1</b>
September	50.8	307.9	20.1	1.5	1.2	32.2	<b>413.9</b>
December	45.7	80.7	15.0	1.0	1.1	8.0	<b>151.8</b>
SEASONALLY ADJUSTED							
<b>2003</b>							
September	57.5	158.1	22.7	2.0	1.2	11.1	<b>249.2</b>
December	59.6	192.6	23.3	1.7	1.0	14.1	<b>306.0</b>
<b>2004</b>							
March	54.7	213.2	19.6	1.8	1.3	16.6	<b>256.8</b>
June	51.0	151.0	19.4	1.7	1.2	13.9	<b>235.7</b>
September	51.8	134.8	19.5	1.3	1.1	10.6	<b>215.1</b>
December	50.6	132.7	16.5	1.3	1.1	12.9	<b>229.9</b>
TREND							
<b>2003</b>							
September	59.1	178.9	22.7	2.0	1.2	12.3	<b>277.6</b>
December	57.5	187.8	21.8	1.8	1.2	14.0	<b>274.8</b>
<b>2004</b>							
March	54.9	187.5	20.8	1.7	1.2	14.9	<b>262.3</b>
June	52.6	166.6	19.5	1.6	1.2	13.9	<b>240.2</b>
September	51.0	141.1	18.4	1.5	1.1	12.4	<b>223.6</b>
December	50.6	124.7	17.5	1.3	1.1	11.6	<b>220.1</b>

(a) For more information refer to paragraphs 4, 5 and 7 of the Explanatory Notes.

# 7

## NUMBER OF LIVESTOCK SLAUGHTERED (a), Sheep: All Series

Quarter	New South Wales	Victoria	Queensland	South Australia	Western Australia	Tasmania	Australia
	'000	'000	'000	'000	'000	'000	'000
ORIGINAL							
<b>2003</b>							
September	611.7	540.9	215.2	186.1	274.7	71.3	<b>1 899.9</b>
December	792.9	806.0	237.6	284.8	514.3	100.8	<b>2 736.3</b>
<b>2004</b>							
March	950.6	918.1	227.2	268.0	604.1	108.1	<b>3 076.2</b>
June	954.8	813.8	212.8	208.5	452.4	66.1	<b>2 708.4</b>
September	715.1	672.7	220.1	213.1	479.1	45.2	<b>2 345.3</b>
December	934.0	886.6	226.6	264.7	606.0	96.7	<b>3 014.7</b>
SEASONALLY ADJUSTED							
<b>2003</b>							
September	652.5	654.1	216.9	212.0	310.5	114.5	<b>2 183.8</b>
December	742.8	720.9	243.0	247.1	450.8	99.6	<b>2 495.3</b>
<b>2004</b>							
March	893.6	797.2	224.4	232.8	494.5	79.9	<b>2 724.0</b>
June	1 024.6	900.3	209.2	256.0	600.0	65.5	<b>2 994.2</b>
September	765.3	815.7	221.9	241.6	542.4	72.1	<b>2 668.7</b>
December	871.5	790.8	231.2	229.1	532.2	95.4	<b>2 714.1</b>
TREND							
<b>2003</b>							
September	713.8	677.3	224.7	218.1	370.3	113.4	<b>2 327.8</b>
December	758.9	719.0	226.6	228.2	419.8	98.1	<b>2 447.5</b>
<b>2004</b>							
March	868.6	803.2	224.5	244.0	508.9	80.1	<b>2 714.2</b>
June	910.9	843.8	219.4	246.1	554.7	72.3	<b>2 823.5</b>
September	880.8	836.9	220.0	241.5	557.8	75.9	<b>2 789.0</b>
December	835.1	808.8	226.6	235.9	547.4	85.2	<b>2 715.0</b>

(a) For more information refer to paragraphs 4, 5 and 7 of the Explanatory Notes.

## NUMBER OF LIVESTOCK SLAUGHTERED (a), Lambs: All Series

Quarter	New South Wales	Victoria	Queensland	South Australia	Western Australia	Tasmania	Australia
	'000	'000	'000	'000	'000	'000	'000
ORIGINAL							
<b>2003</b>							
September	913.1	1 478.0	74.1	596.2	501.0	105.5	<b>3 667.9</b>
December	1 056.9	1 746.8	58.6	784.7	629.0	95.5	<b>4 371.5</b>
<b>2004</b>							
March	1 087.9	1 624.9	56.7	813.0	598.7	104.1	<b>4 285.5</b>
June	989.5	1 621.6	72.1	776.6	663.0	114.1	<b>4 236.9</b>
September	892.5	1 393.7	74.7	559.7	577.7	99.5	<b>3 597.7</b>
December	1 049.2	1 839.6	72.1	853.9	639.4	100.4	<b>4 554.6</b>
SEASONALLY ADJUSTED							
<b>2003</b>							
September	924.6	1 525.2	65.8	750.1	551.2	100.5	<b>3 884.1</b>
December	1 041.1	1 629.0	63.6	745.0	578.5	98.9	<b>4 189.6</b>
<b>2004</b>							
March	1 065.3	1 652.4	61.8	752.1	603.6	105.8	<b>4 253.6</b>
June	995.6	1 658.7	69.6	725.2	655.7	113.8	<b>4 211.1</b>
September	897.7	1 443.3	66.4	706.6	634.3	95.0	<b>3 824.8</b>
December	1 048.6	1 714.0	78.2	807.2	589.4	104.0	<b>4 352.1</b>
TREND							
<b>2003</b>							
September	1 037.2	1 631.8	67.5	731.9	545.3	96.2	<b>4 102.4</b>
December	1 047.6	1 639.7	63.0	744.9	578.1	102.0	<b>4 181.0</b>
<b>2004</b>							
March	1 028.0	1 627.0	63.5	740.4	616.7	106.3	<b>4 192.2</b>
June	992.1	1 600.7	66.5	730.0	632.9	105.8	<b>4 128.0</b>
September	972.8	1 587.6	70.5	741.6	628.6	103.6	<b>4 097.3</b>
December	981.2	1 605.1	74.7	765.7	612.2	101.0	<b>4 135.7</b>

(a) For more information refer to paragraphs 4, 5 and 7 of the Explanatory Notes.



## NUMBER OF LIVESTOCK SLAUGHTERED (a), Pigs: All Series

Quarter	New South Wales	Victoria	Queensland	South Australia	Western Australia	Tasmania	Australia
	'000	'000	'000	'000	'000	'000	'000
ORIGINAL							
<b>2003</b>							
September	453.9	248.0	335.7	215.8	170.6	11.6	<b>1 437.9</b>
December	439.4	243.7	326.1	191.3	162.3	11.7	<b>1 376.9</b>
<b>2004</b>							
March	414.6	233.7	320.9	202.3	167.7	10.7	<b>1 352.3</b>
June	443.1	247.7	335.4	211.5	173.8	10.2	<b>1 424.1</b>
September	415.9	235.2	323.1	201.3	170.6	11.6	<b>1 360.1</b>
December	392.5	210.3	314.6	218.5	152.6	13.3	<b>1 303.7</b>
SEASONALLY ADJUSTED							
<b>2003</b>							
September	443.1	244.3	334.2	216.5	168.9	11.9	<b>1 417.5</b>
December	441.3	245.1	332.7	207.4	169.3	11.3	<b>1 397.5</b>
<b>2004</b>							
March	429.3	240.5	327.9	198.8	168.8	11.4	<b>1 391.2</b>
June	427.0	240.0	323.3	197.6	166.7	9.7	<b>1 367.2</b>
September	413.0	230.6	318.8	203.1	167.7	11.6	<b>1 341.4</b>
December	396.4	211.6	322.1	235.3	159.9	12.8	<b>1 329.7</b>
TREND							
<b>2003</b>							
September	447.3	249.5	331.6	214.5	169.6	11.5	<b>1 424.1</b>
December	438.7	244.3	331.4	207.3	168.7	11.4	<b>1 401.1</b>
<b>2004</b>							
March	432.1	241.8	328.8	198.9	168.8	10.9	<b>1 385.3</b>
June	423.5	237.2	323.6	200.1	167.5	10.8	<b>1 366.5</b>
September	412.1	227.9	321.0	210.1	165.2	11.4	<b>1 346.2</b>
December	400.8	216.9	319.9	224.3	162.2	12.3	<b>1 327.0</b>

(a) For more information refer to paragraphs 4, 5 and 7 of the Explanatory Notes.

## NUMBER OF CHICKENS SLAUGHTERED(a): All Series

Quarter	New South Wales	Victoria	Queensland	South Australia	Western Australia	Australia
	'000	'000	'000	'000	'000	'000
ORIGINAL						
<b>2003</b>						
September	38 377.1	29 312.9	19 209.3	np	np	<b>105 746.9</b>
December	36 797.4	31 092.4	20 288.0	np	np	<b>107 480.2</b>
<b>2004</b>						
March	37 155.1	30 319.2	19 761.1	np	np	<b>106 367.5</b>
June	37 029.2	29 621.5	18 213.7	np	np	<b>104 147.4</b>
September	37 001.4	29 496.7	20 190.6	np	np	<b>106 408.0</b>
December	40 401.4	33 740.6	22 856.1	np	np	<b>118 723.1</b>
SEASONALLY ADJUSTED						
<b>2003</b>						
September	38 972.2	30 061.3	19 552.6	np	np	<b>107 675.0</b>
December	35 492.2	30 069.2	19 384.2	np	np	<b>103 763.1</b>
<b>2004</b>						
March	37 047.5	29 982.2	19 631.2	np	np	<b>105 755.4</b>
June	37 361.4	29 916.7	18 716.4	np	np	<b>105 559.0</b>
September	37 528.7	30 302.6	20 715.1	np	np	<b>108 540.3</b>
December	39 320.0	32 720.4	21 599.3	np	np	<b>114 806.1</b>
TREND						
<b>2003</b>						
September	36 924.7	29 910.2	19 334.9	np	np	<b>105 053.3</b>
December	36 939.0	29 997.7	19 383.3	np	np	<b>105 315.2</b>
<b>2004</b>						
March	36 756.6	29 884.4	19 284.3	np	np	<b>105 234.5</b>
June	37 167.2	30 102.8	19 586.7	np	np	<b>106 699.1</b>
September	38 051.5	30 864.6	20 373.2	np	np	<b>109 705.9</b>
December	38 798.9	31 895.8	21 300.1	np	np	<b>112 911.8</b>

np not available for publication but included in totals where applicable, unless otherwise indicated

(a) For more information refer to paragraphs 8 and 9 of the Explanatory Notes.

## NUMBER OF LIVESTOCK SLAUGHTERED (a): Original

Financial year	New South Wales '000	Victoria '000	Queensland '000	South Australia '000	Western Australia '000	Tasmania '000	Australia '000
<b>BULLS, BULLOCKS AND STEERS</b>							
2001-02	820.5	630.6	2 150.0	182.0	137.7	80.6	<b>4 002.4</b>
2002-03	961.6	630.0	1 993.7	166.6	173.4	79.9	<b>4 006.3</b>
2003-04	794.0	613.5	2 049.9	178.6	200.4	98.3	<b>3 935.7</b>
<b>COWS AND HEIFERS</b>							
2001-02	992.1	800.6	1 364.2	150.6	230.6	79.4	<b>3 621.7</b>
2002-03	968.9	1 020.5	1 521.6	192.5	255.9	112.9	<b>4 076.4</b>
2003-04	822.2	943.1	1 514.4	164.4	262.5	106.5	<b>3 817.2</b>
<b>TOTAL CATTLE (excluding calves)</b>							
2001-02	1 812.6	1 431.1	3 514.1	332.6	368.3	160.0	<b>7 624.1</b>
2002-03	1 930.5	1 650.4	3 515.2	359.1	429.3	192.8	<b>8 082.7</b>
2003-04	1 616.1	1 556.6	3 564.2	342.9	462.9	204.7	<b>7 752.9</b>
<b>CALVES</b>							
2001-02	205.7	597.0	99.7	9.6	6.0	44.6	<b>963.3</b>
2002-03	246.1	749.3	92.1	11.0	5.3	41.2	<b>1 145.8</b>
2003-04	221.9	659.2	84.7	7.2	4.7	47.3	<b>1 025.8</b>
<b>SHEEP</b>							
2001-02	5 712.7	3 819.5	1 334.0	1 337.7	1 961.3	275.8	<b>14 441.0</b>
2002-03	5 282.2	3 641.2	1 142.0	1 431.8	1 771.8	388.3	<b>13 657.3</b>
2003-04	3 310.0	3 078.9	892.8	947.5	1 845.4	346.3	<b>10 420.7</b>
<b>LAMBS</b>							
2001-02	4 558.8	6 997.4	627.6	2 933.4	1 856.6	426.4	<b>17 400.2</b>
2002-03	4 388.8	6 904.8	340.3	2 841.1	2 021.0	374.0	<b>16 869.8</b>
2003-04	4 047.4	6 471.4	261.5	2 970.6	2 391.8	419.2	<b>16 561.8</b>
<b>PIGS</b>							
2001-02	1 885.0	1 042.1	1 133.7	690.0	591.4	53.1	<b>5 402.4</b>
2002-03	1 860.6	1 033.2	1 234.8	884.1	672.3	47.7	<b>5 741.7</b>
2003-04	1 751.1	973.1	1 318.1	820.9	674.4	44.2	<b>5 591.2</b>
<b>CHICKENS</b>							
2001-02	156 682.0	109 311.2	70 940.6	np	np	np	<b>415 555.6</b>
2002-03	149 917.0	117 892.0	75 149.3	np	np	np	<b>419 181.0</b>
2003-04	149 358.7	120 345.9	77 472.0	np	np	np	<b>423 742.0</b>

np not available for publication but included in totals where applicable, unless otherwise indicated

(a) For more information refer to paragraphs 4, 5 and 7 to 9 of the Explanatory Notes.

Quarter	New South Wales	Victoria	Queensland	South Australia	Western Australia	Tasmania	Australia
	tonnes	tonnes	tonnes	tonnes	tonnes	tonnes	tonnes
ORIGINAL							
<b>2003</b>							
September	95 497	80 310	261 918	16 564	24 687	10 120	<b>489 378</b>
December	102 889	87 929	236 250	24 513	32 363	13 282	<b>497 502</b>
<b>2004</b>							
March	102 004	98 075	211 490	24 027	31 198	16 385	<b>483 454</b>
June	101 535	95 009	265 058	21 651	28 307	15 667	<b>527 514</b>
September	112 602	87 845	290 620	17 620	30 219	12 550	<b>551 747</b>
December	107 392	93 276	246 510	25 797	32 317	14 138	<b>519 707</b>
SEASONALLY ADJUSTED							
<b>2003</b>							
September	97 654	86 050	232 153	19 645	25 560	12 973	<b>477 890</b>
December	103 307	85 644	244 634	22 798	28 984	13 623	<b>497 680</b>
<b>2004</b>							
March	101 478	92 476	251 184	22 021	29 648	14 077	<b>512 403</b>
June	99 487	96 953	249 268	21 809	31 459	14 520	<b>510 681</b>
September	115 189	94 077	257 364	21 025	32 615	16 030	<b>538 926</b>
December	107 616	91 027	255 200	23 867	29 142	14 527	<b>519 694</b>
TREND							
<b>2003</b>							
September	103 481	87 041	233 814	21 157	26 428	13 234	<b>483 989</b>
December	101 158	88 097	242 285	21 673	27 932	13 463	<b>493 555</b>
<b>2004</b>							
March	101 669	91 619	249 076	21 905	30 212	14 146	<b>508 349</b>
June	104 564	94 497	252 511	21 867	31 282	14 804	<b>519 497</b>
September	108 136	94 372	254 591	22 039	31 279	15 153	<b>525 501</b>
December	110 875	92 652	256 261	22 722	30 713	15 209	<b>527 871</b>

(a) For more information refer to paragraphs 4 to 7 of the Explanatory Notes.

## RED MEAT PRODUCED(a), Veal: All Series

	<i>New South Wales</i>	<i>Victoria</i>	<i>Queensland</i>	<i>South Australia</i>	<i>Western Australia</i>	<i>Tasmania</i>	<b><i>Australia</i></b>
<i>Quarter</i>	tonnes	tonnes	tonnes	tonnes	tonnes	tonnes	tonnes
ORIGINAL							
<b>2003</b>							
September	3 621	7 079	1 167	70	80	653	<b>12 683</b>
December	3 464	3 120	1 068	45	60	176	<b>7 945</b>
<b>2004</b>							
March	3 643	1 815	1 019	55	63	36	<b>6 644</b>
June	3 547	3 062	999	62	55	82	<b>7 821</b>
September	3 252	6 293	949	50	63	627	<b>11 246</b>
December	2 968	1 857	736	38	74	164	<b>5 851</b>
SEASONALLY ADJUSTED							
<b>2003</b>							
September	3 739	3 137	1 142	64	72	222	<b>8 305</b>
December	3 959	4 975	1 202	56	61	270	<b>10 542</b>
<b>2004</b>							
March	3 374	6 732	976	57	66	317	<b>8 769</b>
June	3 296	3 609	956	56	59	280	<b>8 134</b>
September	3 359	2 799	927	45	56	214	<b>7 368</b>
December	3 389	2 913	831	47	76	250	<b>7 756</b>
TREND							
<b>2003</b>							
September	3 903	3 996	1 138	65	72	243	<b>9 355</b>
December	3 690	4 677	1 115	59	66	271	<b>9 345</b>
<b>2004</b>							
March	3 508	4 783	1 048	55	61	290	<b>9 023</b>
June	3 363	4 060	960	53	60	274	<b>8 256</b>
September	3 321	3 139	898	49	63	247	<b>7 639</b>
December	3 371	2 634	859	45	68	229	<b>7 468</b>

(a) For more information refer to paragraphs 4 to 7 of the Explanatory Notes.

## RED MEAT PRODUCED(a), Mutton: All Series

Quarter	New South Wales	Victoria	Queensland	South Australia	Western Australia	Tasmania	Australia
	tonnes	tonnes	tonnes	tonnes	tonnes	tonnes	tonnes
ORIGINAL							
<b>2003</b>							
September	13 330	10 463	4 507	4 546	5 619	1 382	<b>39 847</b>
December	18 720	16 783	5 198	7 300	10 456	2 031	<b>60 488</b>
<b>2004</b>							
March	21 157	17 886	4 838	6 605	12 086	2 122	<b>64 694</b>
June	20 127	14 923	4 479	4 919	8 932	1 304	<b>54 684</b>
September	15 267	12 855	4 650	4 977	9 617	873	<b>48 240</b>
December	21 718	18 397	4 953	6 292	12 066	1 922	<b>65 349</b>
SEASONALLY ADJUSTED							
<b>2003</b>							
September	13 980	12 517	4 626	5 110	6 305	2 246	<b>45 369</b>
December	17 132	14 315	5 146	6 092	9 111	1 979	<b>53 428</b>
<b>2004</b>							
March	20 351	15 711	4 833	5 850	9 937	1 569	<b>58 224</b>
June	21 986	17 474	4 424	6 296	11 976	1 301	<b>62 047</b>
September	16 087	15 435	4 770	5 582	10 804	1 409	<b>54 665</b>
December	19 772	15 639	4 882	5 238	10 538	1 868	<b>57 093</b>
TREND							
<b>2003</b>							
September	15 453	13 077	4 617	5 252	7 497	2 219	<b>48 280</b>
December	17 170	14 136	4 856	5 683	8 484	1 936	<b>52 100</b>
<b>2004</b>							
March	19 457	15 759	4 823	6 075	10 224	1 586	<b>57 545</b>
June	19 898	16 376	4 684	5 989	11 093	1 423	<b>58 979</b>
September	19 085	16 163	4 686	5 687	11 100	1 490	<b>57 808</b>
December	18 299	15 683	4 803	5 372	10 847	1 662	<b>56 279</b>

(a) For more information refer to paragraphs 4 to 7 of the Explanatory Notes.

Quarter	<i>New South Wales</i>	<i>Victoria</i>	<i>Queensland</i>	<i>South Australia</i>	<i>Western Australia</i>	<i>Tasmania</i>	<b>Australia</b>
	tonnes	tonnes	tonnes	tonnes	tonnes	tonnes	tonnes
ORIGINAL							
<b>2003</b>							
September	17 994	28 858	1 425	12 797	9 935	2 136	<b>73 146</b>
December	21 602	35 515	1 148	17 470	12 439	1 894	<b>90 068</b>
<b>2004</b>							
March	22 353	33 344	1 116	19 341	11 592	2 059	<b>89 804</b>
June	20 199	33 055	1 438	18 144	13 246	2 348	<b>88 430</b>
September	17 400	27 334	1 426	11 403	11 183	2 011	<b>70 757</b>
December	20 812	36 524	1 420	18 060	12 380	1 972	<b>91 169</b>
SEASONALLY ADJUSTED							
<b>2003</b>							
September	18 357	30 299	1 273	16 638	11 029	2 035	<b>79 198</b>
December	21 358	33 307	1 251	16 739	11 467	1 975	<b>86 023</b>
<b>2004</b>							
March	21 752	33 704	1 217	17 766	11 748	2 125	<b>88 104</b>
June	20 166	33 248	1 377	16 505	12 899	2 290	<b>87 317</b>
September	17 613	28 822	1 267	14 890	12 385	1 920	<b>76 986</b>
December	20 980	34 170	1 504	17 241	11 440	2 059	<b>86 929</b>
TREND							
<b>2003</b>							
September	20 709	32 308	1 299	16 190	10 842	1 917	<b>83 298</b>
December	21 300	33 243	1 241	16 979	11 422	2 047	<b>86 137</b>
<b>2004</b>							
March	20 976	33 136	1 253	17 091	12 118	2 140	<b>86 822</b>
June	20 023	32 273	1 300	16 462	12 383	2 128	<b>84 862</b>
September	19 397	31 729	1 364	16 124	12 273	2 078	<b>83 101</b>
December	19 446	31 970	1 432	16 156	11 925	2 016	<b>82 856</b>

(a) For more information refer to paragraphs 4 to 7 of the Explanatory Notes.

Quarter	New South Wales	Victoria	Queensland	South Australia	Western Australia	Tasmania	Australia
	tonnes	tonnes	tonnes	tonnes	tonnes	tonnes	tonnes
ORIGINAL							
<b>2003</b>							
September	34 473	17 847	26 157	15 415	11 465	656	<b>106 120</b>
December	32 043	17 309	24 551	13 211	10 691	642	<b>98 551</b>
<b>2004</b>							
March	30 329	16 884	23 198	14 172	11 252	593	<b>96 531</b>
June	32 956	18 250	25 868	15 162	11 781	566	<b>104 697</b>
September	30 504	17 557	24 936	14 135	11 533	643	<b>99 416</b>
December	28 477	15 230	23 337	16 112	10 220	719	<b>94 180</b>
SEASONALLY ADJUSTED							
<b>2003</b>							
September	33 410	17 323	25 575	15 440	11 206	670	<b>103 608</b>
December	32 620	17 384	25 018	14 593	11 286	627	<b>100 886</b>
<b>2004</b>							
March	31 808	17 599	24 547	13 871	11 407	636	<b>100 487</b>
June	31 153	17 682	24 639	14 048	11 193	540	<b>99 224</b>
September	30 037	17 057	24 106	14 200	11 242	634	<b>97 365</b>
December	29 247	15 496	23 883	17 681	10 828	699	<b>97 759</b>
TREND							
<b>2003</b>							
September	33 625	17 664	25 306	15 370	11 345	647	<b>103 896</b>
December	32 650	17 497	24 986	14 617	11 274	634	<b>101 501</b>
<b>2004</b>							
March	31 817	17 587	24 801	13 891	11 318	604	<b>100 086</b>
June	31 007	17 441	24 438	14 096	11 266	597	<b>98 991</b>
September	30 130	16 819	24 183	15 103	11 119	625	<b>98 053</b>
December	29 342	15 963	23 953	16 425	10 944	665	<b>97 295</b>

(a) For more information refer to paragraphs 4 to 7 of the Explanatory Notes.



## TOTAL RED MEAT PRODUCED(a): All Series

Quarter	New South Wales	Victoria	Queensland	South Australia	Western Australia	Tasmania	Australia
	tonnes	tonnes	tonnes	tonnes	tonnes	tonnes	tonnes
ORIGINAL							
<b>2003</b>							
September	164 916	144 556	295 174	49 392	51 786	14 947	<b>721 174</b>
December	178 719	160 656	268 215	62 540	66 010	18 024	<b>754 555</b>
<b>2004</b>							
March	179 487	168 004	241 661	64 200	66 191	21 195	<b>741 128</b>
June	178 365	164 299	297 841	59 938	62 322	19 968	<b>783 145</b>
September	179 025	151 884	322 582	48 184	62 615	16 704	<b>781 405</b>
December	181 367	165 284	276 956	66 300	67 058	18 916	<b>776 254</b>
SEASONALLY ADJUSTED							
<b>2003</b>							
September	167 140	149 326	264 769	56 897	54 172	18 146	<b>714 370</b>
December	178 376	155 625	277 251	60 278	60 909	18 474	<b>748 559</b>
<b>2004</b>							
March	178 763	166 222	282 757	59 565	62 806	18 724	<b>767 987</b>
June	176 088	168 966	280 664	58 714	67 586	18 931	<b>767 403</b>
September	182 285	158 190	288 434	55 742	67 102	20 207	<b>775 310</b>
December	181 004	159 245	286 300	64 074	62 024	19 403	<b>769 231</b>
TREND							
<b>2003</b>							
September	177 171	154 086	266 174	58 034	56 184	18 260	<b>728 818</b>
December	175 968	157 650	274 483	59 011	59 178	18 351	<b>742 638</b>
<b>2004</b>							
March	177 427	162 884	281 001	59 017	63 933	18 766	<b>761 825</b>
June	178 855	164 647	283 893	58 467	66 084	19 226	<b>770 585</b>
September	180 069	162 222	285 722	59 002	65 834	19 593	<b>772 102</b>
December	181 333	158 902	287 308	60 720	64 497	19 781	<b>771 769</b>

(a) For more information refer to paragraphs 4 to 7 of the Explanatory Notes.

## CHICKEN MEAT PRODUCED(a): All Series

Quarter	New South Wales	Victoria	Queensland	South Australia	Western Australia	Australia
	tonnes	tonnes	tonnes	tonnes	tonnes	tonnes
ORIGINAL						
<b>2003</b>						
September	62 524	49 055	29 003	np	np	<b>169 979</b>
December	63 467	51 857	30 409	np	np	<b>175 765</b>
<b>2004</b>						
March	58 710	54 627	28 890	np	np	<b>172 068</b>
June	63 053	49 810	29 587	np	np	<b>175 791</b>
September	64 322	50 354	30 849	np	np	<b>179 282</b>
December	69 342	56 172	34 816	np	np	<b>195 330</b>
SEASONALLY ADJUSTED						
<b>2003</b>						
September	62 128	50 752	29 364	np	np	<b>171 803</b>
December	62 014	49 249	29 025	np	np	<b>169 784</b>
<b>2004</b>						
March	58 730	55 044	29 366	np	np	<b>172 917</b>
June	63 623	50 452	30 191	np	np	<b>177 973</b>
September	64 545	52 048	31 195	np	np	<b>181 403</b>
December	68 316	53 361	33 244	np	np	<b>189 250</b>
TREND						
<b>2003</b>						
September	60 964	50 230	28 989	np	np	<b>169 172</b>
December	60 777	51 174	29 132	np	np	<b>170 753</b>
<b>2004</b>						
March	61 072	51 985	29 442	np	np	<b>173 784</b>
June	62 509	52 179	30 243	np	np	<b>177 961</b>
September	65 092	52 278	31 468	np	np	<b>183 062</b>
December	67 806	52 329	32 728	np	np	<b>187 640</b>

np not available for publication but included in totals where applicable, unless otherwise indicated

(a) For more information refer to paragraphs 8 and 9 of the Explanatory Notes.

## MEAT PRODUCED(a): Original

<i>Financial year</i>	<i>New South Wales</i> tonnes	<i>Victoria</i> tonnes	<i>Queensland</i> tonnes	<i>South Australia</i> tonnes	<i>Western Australia</i> tonnes	<i>Tasmania</i> tonnes	<i>Australia</i> tonnes
BEEF							
2001-02	460 964	342 898	972 749	85 882	88 593	43 923	<b>1 996 167</b>
2002-03	471 498	370 223	946 950	88 362	105 074	51 376	<b>2 034 613</b>
2003-04	401 926	361 323	974 715	86 755	116 555	55 454	<b>1 997 848</b>
VEAL							
2001-02	12 992	11 998	4 852	278	377	899	<b>31 446</b>
2002-03	16 493	16 007	4 202	341	300	826	<b>38 220</b>
2003-04	14 277	15 076	4 253	234	258	947	<b>35 093</b>
MUTTON							
2001-02	121 844	74 425	24 801	30 342	39 481	5 416	<b>296 308</b>
2002-03	106 106	67 552	20 741	30 893	35 431	7 495	<b>268 218</b>
2003-04	73 335	60 055	19 021	23 369	37 094	6 839	<b>219 713</b>
LAMB							
2001-02	91 401	136 325	11 851	64 285	35 618	8 466	<b>347 947</b>
2002-03	85 304	130 699	6 284	60 114	39 568	7 439	<b>329 407</b>
2003-04	82 149	130 772	5 127	67 753	47 212	8 436	<b>341 448</b>
PIG MEAT							
2001-02	144 146	73 652	85 940	48 329	39 996	3 159	<b>395 534</b>
2002-03	140 247	72 105	94 434	64 147	45 490	2 715	<b>419 555</b>
2003-04	129 800	70 289	99 774	57 960	45 190	2 457	<b>405 898</b>
TOTAL RED MEAT							
2001-02	831 347	639 298	1 100 193	229 116	204 065	61 863	<b>3 067 401</b>
2002-03	819 648	656 586	1 072 611	243 857	225 863	69 851	<b>3 090 013</b>
2003-04	701 486	637 515	1 102 890	236 071	246 309	74 134	<b>3 000 002</b>
CHICKEN MEAT							
2001-02	273 445	180 993	99 316	np	np	np	<b>667 471</b>
2002-03	256 445	204 440	114 327	np	np	np	<b>689 826</b>
2003-04	247 755	205 348	117 889	np	np	np	<b>693 602</b>

np not available for publication but included in totals where applicable, unless otherwise indicated

(a) For more information refer to paragraphs 4 to 9 in the Explanatory Notes.

Period	FRESH, CHILLED OR FROZEN MEAT									PROCESSED MEAT	
	<i>Beef bone-in</i>	<i>Beef bone-out</i>	<i>Veal bone-in</i>	<i>Veal bone-out</i>	<i>Mutton bone-in</i>	<i>Mutton bone-out</i>	<i>Lamb bone-in</i>	<i>Lamb bone-out</i>	<i>Pork</i>	<i>Bacon and ham</i>	<i>Canned meat</i>
	tonnes	tonnes	tonnes	tonnes	tonnes	tonnes	tonnes	tonnes	tonnes	tonnes	tonnes
<b>2001-02</b>	34 126	892 317	2 424	7 119	113 894	52 072	104 565	13 794	58 964	122	15 724
<b>2002-03</b>	37 467	894 430	3 675	6 458	109 345	52 275	87 907	14 082	62 927	351	17 048
<b>2003-04</b>	32 069	852 412	2 893	6 262	86 539	42 722	100 537	18 326	50 667	558	24 705
<b>2003</b>											
September	8 072	206 200	1 053	1 935	13 959	6 776	18 839	3 549	15 183	117	6 702
December	8 533	222 440	742	1 974	25 216	10 818	30 351	4 391	11 991	191	6 067
<b>2004</b>											
March	6 996	183 077	487	982	24 575	12 034	25 026	4 674	11 579	136	5 920
June	8 468	240 695	611	1 371	22 790	13 095	26 320	5 712	11 914	114	6 015
September	7 208	245 649	767	2 286	17 892	9 203	18 130	3 866	11 842	114	5 783
December	12 113	254 284	789	1 403	28 184	11 810	30 208	5 134	10 805	133	6 254

(a) For more information refer to paragraphs 10 and 11 of the Explanatory Notes.

<i>Period</i>	<i>Number</i>	<i>Gross weight</i>	<i>Gross value</i>	<i>Unit value</i>
	'000	'000 tonnes	\$'000	\$
.....				
SHEEP				
<b>2001-02</b>	6 443.2	318.0	391 705	60.79
<b>2002-03</b>	5 843.2	273.0	408 235	69.86
<b>2003-04</b>	3 842.7	188.2	266 457	69.34
<b>2003</b>				
September	1 091.2	52.2	79 320	72.69
December	1 046.7	53.2	73 698	70.41
<b>2004</b>				
March	1 028.9	50.4	68 609	66.68
June	675.9	32.4	44 830	66.33
September	849.4	48.5	58 088	68.39
December	839.8	42.2	53 946	64.24
.....				
CATTLE				
<b>2001-02</b>	797.0	293.5	525 535	659.39
<b>2002-03</b>	976.6	362.5	569 288	582.93
<b>2003-04</b>	581.5	192.0	317 850	546.60
<b>2003</b>				
September	163.4	51.8	81 667	499.80
December	150.0	49.8	83 738	558.25
<b>2004</b>				
March	96.7	32.4	54 772	566.41
June	171.2	58.1	97 673	570.52
September	171.9	57.3	111 885	650.87
December	130.1	45.7	94 381	725.45

(a) For more information refer to paragraph 12 of the Explanatory Notes.

## WHOLE MILK INTAKE, By Factories(a)(b): All Series

	<i>New South Wales</i>	<i>Victoria</i>	<i>Queensland</i>	<i>South Australia</i>	<i>Western Australia</i>	<i>Tasmania</i>	<b><i>Australia</i></b>
<i>Quarter</i>	ML	ML	ML	ML	ML	ML	ML
ORIGINAL							
<b>2003</b>							
June	297	971	167	163	98	87	<b>1 782</b>
September	328	1 492	185	163	107	95	<b>2 370</b>
December	367	2 326	182	213	113	231	<b>3 431</b>
<b>2004</b>							
March	302	1 546	161	172	93	168	<b>2 442</b>
June	274	1 070	147	156	91	95	<b>1 832</b>
September	308	1 535	167	160	101	98	<b>2 369</b>
SEASONALLY ADJUSTED							
<b>2003</b>							
June	333	1 528	181	183	103	136	<b>2 464</b>
September	321	1 577	175	170	101	143	<b>2 487</b>
December	321	1 581	172	177	106	145	<b>2 502</b>
<b>2004</b>							
March	316	1 635	165	180	100	153	<b>2 549</b>
June	307	1 675	159	175	95	149	<b>2 560</b>
September	301	1 627	159	167	96	148	<b>2 498</b>
TREND							
<b>2003</b>							
June	318	1 539	178	183	102	139	<b>2 459</b>
September	321	1 553	176	180	103	141	<b>2 474</b>
December	320	1 598	171	179	103	146	<b>2 517</b>
<b>2004</b>							
March	315	1 631	165	177	100	149	<b>2 537</b>
June	308	1 648	161	174	97	150	<b>2 538</b>
September	302	1 653	157	170	95	149	<b>2 526</b>

(a) For more information refer to paragraph 13 of the Explanatory Notes.

(b) Data for Australian Capital Territory are included in New South Wales; data for Northern Territory are included in South Australia.

Source: Original series data from Dairy Australia.

MARKET MILK SALES, By Factories(a)(b): All Series

	<i>New South Wales</i>	<i>Victoria</i>	<i>Queensland</i>	<i>South Australia</i>	<i>Western Australia</i>	<i>Tasmania</i>	<b><i>Australia</i></b>
<i>Quarter</i>	ML	ML	ML	ML	ML	ML	ML
ORIGINAL							
<b>2003</b>							
June	155	121	101	46	52	13	<b>487</b>
September	159	124	104	46	51	13	<b>497</b>
December	156	120	102	45	51	13	<b>488</b>
<b>2004</b>							
March	155	119	102	46	52	13	<b>487</b>
June	158	120	103	45	50	13	<b>489</b>
September	158	121	108	47	52	13	<b>499</b>
SEASONALLY ADJUSTED							
<b>2003</b>							
June	154	121	101	46	51	13	<b>486</b>
September	157	121	101	45	51	13	<b>489</b>
December	157	120	102	46	51	13	<b>490</b>
<b>2004</b>							
March	157	122	102	47	52	13	<b>493</b>
June	156	121	104	45	50	13	<b>489</b>
September	156	118	105	46	51	13	<b>490</b>
TREND							
<b>2003</b>							
June	155	120	101	45	51	13	<b>484</b>
September	156	121	102	46	51	13	<b>488</b>
December	157	121	102	46	51	13	<b>491</b>
<b>2004</b>							
March	157	121	103	46	51	13	<b>491</b>
June	156	120	104	46	51	13	<b>490</b>
September	156	119	105	46	50	13	<b>490</b>

(a) For more information refer to paragraph 13 of the Explanatory Notes.

(b) Data for Australian Capital Territory are included in New South Wales; data for Northern Territory are included in South Australia.

Source: Original series data from Dairy Australia.

## BROKERS AND DEALERS RECEIVALS OF TAXABLE WOOL(a): All Series

Quarter	New South Wales	Victoria	Queensland	South Australia	Western Australia	Tasmania	Australia	% of total received by brokers
	tonnes	tonnes	tonnes	tonnes	tonnes	tonnes	tonnes	%
ORIGINAL								
<b>2003</b>								
September	40 255	27 518	6 017	18 119	26 996	2 661	<b>121 566</b>	84.2
December	37 540	38 987	3 360	20 980	30 149	4 811	<b>135 827</b>	82.4
<b>2004</b>								
March	32 387	29 160	4 099	16 355	33 052	2 237	<b>117 290</b>	83.0
June	30 633	24 001	3 652	11 528	19 657	3 429	<b>92 900</b>	78.1
September	42 313	29 087	6 706	19 936	27 521	1 896	<b>127 458</b>	84.1
December	43 764	36 591	4 333	19 815	28 563	3 988	<b>137 053</b>	80.0
SEASONALLY ADJUSTED								
<b>2003</b>								
September	32 800	26 758	4 733	15 558	26 105	2 698	<b>108 651</b>	..
December	33 480	28 393	4 909	17 128	27 050	3 353	<b>114 314</b>	..
<b>2004</b>								
March	37 125	32 361	4 743	17 589	27 399	3 017	<b>122 236</b>	..
June	39 353	34 433	3 132	17 015	30 096	3 998	<b>128 027</b>	..
September	34 425	28 384	5 239	16 979	26 760	1 971	<b>113 757</b>	..
December	38 751	26 723	5 988	16 059	25 522	2 874	<b>115 917</b>	..
TREND								
<b>2003</b>								
September	31 402	27 259	4 478	14 660	25 757	2 878	<b>106 432</b>	..
December	34 562	29 302	4 670	16 657	26 886	3 127	<b>115 205</b>	..
<b>2004</b>								
March	36 662	31 839	4 335	17 568	28 254	3 345	<b>122 002</b>	..
June	37 280	31 970	4 275	17 219	28 289	3 155	<b>122 188</b>	..
September	37 322	29 938	4 817	16 758	27 413	2 818	<b>119 067</b>	..
December	37 216	27 460	5 598	16 382	26 236	2 625	<b>115 519</b>	..

.. not applicable

(a) For more information refer to paragraphs 4, 14 and 15 of the Explanatory Notes.



<i>Financial year</i>	<i>New South Wales</i>	<i>Victoria</i>	<i>Queensland</i>	<i>South Australia</i>	<i>Western Australia</i>	<i>Tasmania</i>	<b><i>Australia</i></b>
.....							
WHOLE MILK INTAKE BY FACTORIES (b) (ML)							
2001-02	1 343	7 405	744	715	393	672	<b>11 271</b>
2002-03	1 301	6 585	720	733	404	585	<b>10 328</b>
2003-04	1 271	6 434	674	703	403	590	<b>10 075</b>
.....							
MARKET MILK SALES BY FACTORIES (b) (ML)							
2001-02	622	459	402	184	192	50	<b>1 909</b>
2002-03	616	473	404	181	200	51	<b>1 925</b>
2003-04	627	484	411	183	204	52	<b>1 961</b>
.....							
BROKERS AND DEALERS RECEIVALS OF TAXABLE WOOL (Tonnes)							
2001-02	163 926	142 338	30 188	83 144	103 028	14 268	<b>536 891</b>
2002-03	168 138	128 444	18 287	65 054	108 739	14 357	<b>503 020</b>
2003-04	140 815	119 667	17 127	66 982	109 854	13 138	<b>467 583</b>

(a) For more information refer to paragraphs 13 to 15 of the Explanatory Notes.

(b) Data for Australian Capital Territory are included in New South Wales; data for Northern Territory are included in South Australia.

Source: Original series milk data from Dairy Australia.

## WHAT IF...? REVISIONS TO TREND ESTIMATES

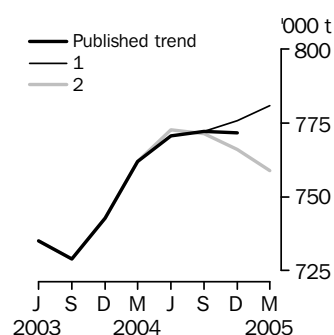
### EFFECT OF NEW SEASONALLY ADJUSTED ESTIMATES ON TREND ESTIMATES

#### TREND REVISIONS

Recent seasonally adjusted and trend estimates are likely to be revised when original estimates for subsequent quarters become available. The approximate effects of possible scenarios on trend estimates are presented below. These illustrate the impact on trend estimates if next quarter's seasonally adjusted estimate either rises or falls by a certain percentage (based on the historical average of movements in seasonally adjusted estimates).

For further information, see paragraphs 20 to 22 of the Explanatory Notes.

#### RED MEAT PRODUCTION



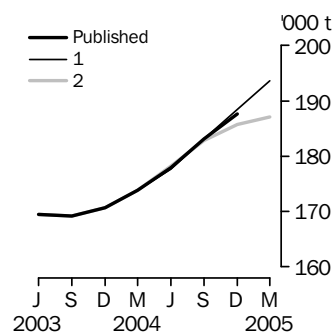
#### WHAT IF NEXT QUARTER'S SEASONALLY ADJUSTED ESTIMATE:

	<i>Trend as published</i>		<i>(1) rises by 3% on Dec Qtr 2004</i>		<i>(2) falls by 3% on Dec Qtr 2004</i>	
	number	% change	number	% change	number	% change
Dec Qtr 2003	742 638	1.9	742 637	1.9	742 637	1.9
Mar Qtr 2004	761 825	2.6	761 825	2.6	761 825	2.6
Jun Qtr 2004	770 585	1.1	770 692	1.2	772 680	1.4
Sep Qtr 2004	772 102	0.2	772 243	0.2	771 520	-0.2
Dec Qtr 2004	771 769	—	775 751	0.5	766 168	-0.7
Mar Qtr 2005	..	..	780 997	0.7	758 953	-0.9

.. not applicable

— nil or rounded to zero (including null cells)

#### CHICKEN MEAT PRODUCTION



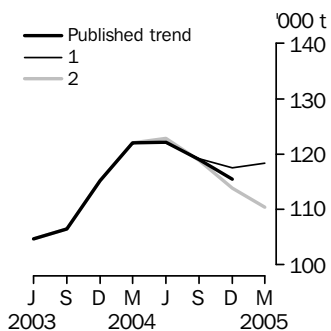
#### WHAT IF NEXT QUARTER'S SEASONALLY ADJUSTED ESTIMATE:

	<i>Trend as published</i>		<i>(1) rises by 4% on Dec Qtr 2004</i>		<i>(2) falls by 4% on Dec Qtr 2004</i>	
	number	% change	number	% change	number	% change
Dec Qtr 2003	170 753	0.9	170 753	0.9	170 753	0.9
Mar Qtr 2004	173 784	1.8	173 783	1.8	173 783	1.8
Jun Qtr 2004	177 961	2.4	177 688	2.2	178 266	2.6
Sep Qtr 2004	183 062	2.9	183 089	3.0	182 888	2.6
Dec Qtr 2004	187 640	2.5	188 480	2.9	185 700	1.5
Mar Qtr 2005	..	..	193 657	2.7	187 062	0.7

.. not applicable

# WHAT IF...? REVISIONS TO TREND ESTIMATES *continued*

## WOOL RECEIVALS



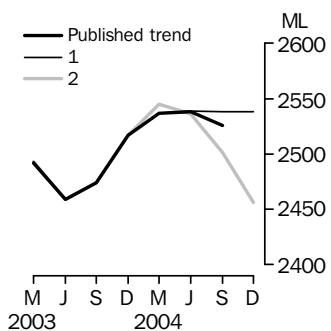
### WHAT IF NEXT QUARTER'S

#### SEASONALLY ADJUSTED ESTIMATE:

	<u>Trend as published</u>		<u>(1) rises by 9% on Dec Qtr 2004</u>		<u>(2) falls by 9% on Dec Qtr 2004</u>	
	number	% change	number	% change	number	% change
Dec Qtr 2003	115 205	8.2	115 206	8.2	115 206	8.2
Mar Qtr 2004	122 002	5.9	122 003	5.9	122 003	5.9
Jun Qtr 2004	122 188	0.2	122 086	0.1	122 849	0.7
Sep Qtr 2004	119 067	-2.6	119 186	-2.4	118 874	-3.2
Dec Qtr 2004	115 519	-3.0	117 582	-1.3	113 885	-4.2
Mar Qtr 2005	..	..	118 355	0.7	110 429	-3.0

.. not applicable

## WHOLE MILK INTAKE BY FACTORIES



### WHAT IF NEXT QUARTER'S

#### SEASONALLY ADJUSTED ESTIMATE:

	<u>Trend as published</u>		<u>(1) rises by 2% on Sep Qtr 2004</u>		<u>(2) falls by 2% on Sep Qtr 2004</u>	
	number	% change	number	% change	number	% change
Sep Qtr 2003	2 474	0.6	2 474	0.6	2 474	0.6
Dec Qtr 2003	2 517	1.7	2 517	1.7	2 517	1.7
Mar Qtr 2004	2 537	0.8	2 537	0.8	2 545	1.1
Jun Qtr 2004	2 538	—	2 539	0.1	2 536	-0.4
Sep Qtr 2004	2 526	-0.5	2 538	—	2 501	-1.4
Dec Qtr 2004	..	..	2 538	—	2 456	-1.8

.. not applicable

— nil or rounded to zero (including null cells)

## EXPLANATORY NOTES

### INTRODUCTION

**1** This publication contains information on livestock slaughterings, meat production, exports of live sheep and live cattle, exports of fresh, frozen and processed meat, and whole milk intake by factories, market milk sales by factories and receivals of taxable wool by wool brokers and dealers.

**2** The figures shown in this publication have been revised where necessary and as a consequence may not agree with similar data shown in previous publications.

**3** Where figures have been rounded, discrepancies may occur between sums of the component items and totals.

**4** Unless indicated otherwise, Australian totals include data for all states and both territories.

### LIVESTOCK SLAUGHTERINGS AND MEAT PRODUCTION

**5** The statistics on slaughterings for red meat production are based on a monthly collection from abattoirs and other major slaughtering establishments and include estimates of animals slaughtered on farms and by country butchers and other small slaughtering establishments.

**6** Red meat is shown in carcass weight and excludes offal.

**7** Care should be taken when using this information as the figures only relate to slaughterings for human consumption and do not include animals condemned, slaughtered for pet food or those killed for boiling down.

**8** Poultry slaughterings and meat produced statistics have been compiled from quarterly returns supplied by commercial poultry slaughtering establishments and comprise boilers, fryers and roasters. Many small producers are excluded from the collection; however, the statistics represent a high level of coverage. Tasmanian, Northern Territory and Australian Capital Territory data are excluded from the Australian total.

**9** Chicken meat is shown in dressed weight of whole birds, pieces and giblets. Some slaughterings and meat production statistics for 'Ducks and Drakes' and 'Other Fowls and Turkeys' are available by contacting the ABS on Hobart (03) 6222 5974 or by writing to GPO Box 66, Hobart Tasmania 7001 (Attention: Agriculture Section).

### EXPORTS OF FRESH, FROZEN AND PROCESSED MEAT

**10** Table 20 shows exports of fresh, frozen and processed meat. International trade statistics are compiled by the ABS from information submitted by exporters and importers or their agents to the Australian Customs Service. Factors can be applied to beef, veal, mutton and lamb bone-out figures to derive bone-in carcass weight which, when added to bone-in figures, shows total exports in carcass weight. The factor for beef and veal is 1.5 and for mutton and lamb, 2.0. This information is sourced from Department of Agriculture, Fisheries and Forestry – Australia.

**11** Beef also includes buffalo meat. Bacon and ham shown is the cured carcass weight of smoked or cooked bacon and ham. It also includes the stated net weight of packs of canned bacon and ham. Canned meat is shown as the canned weight and excludes canned bacon and ham.

### LIVE SHEEP AND CATTLE EXPORTS

**12** Table 21 contains statistics of the number of live sheep and cattle exported, the gross weight, gross value and unit value. The unit value is obtained by dividing the gross value by the number of animals exported. Sheep and cattle exported for breeding are excluded.

### MILK

**13** Tables 2, 22, 23 and 25 contain statistics collected by Dairy Australia. Whole milk intake by factories includes the whole milk equivalent of farm cream intake. Market milk sales includes white, flavoured, high and low fat milk and UHT milk. Interstate transfers of UHT milk have been included in their state of destination.

## EXPLANATORY NOTES *continued*

### WOOL RECEIVALS

**14** The statistics in tables 2, 24 and 25 show the amount of taxable wool received by brokers and purchased by dealers from wool producers. It excludes wool received by brokers on which tax has already been paid by other dealers (private buyers) or brokers.

**15** The information shown is on the basis of the state in which wool has actually been received and does not necessarily reflect the production of wool in that state.

### SEASONAL ADJUSTMENT

**16** Seasonal adjustment is a means of removing the estimated effects of normal seasonal variation from the series so that the effects of other influences can be more clearly recognised.

**17** In the seasonal adjustment of the livestock estimates, account has been taken of both normal seasonal factors and 'trading day' effects, where significant, (arising from the varying length of each quarter and the varying numbers of Sundays, Mondays, Tuesdays etc. in the quarter). Adjustments are also made for the effects of change in the date of Easter holidays, again, where significant. Seasonal adjustment does not remove from the series the effect of irregular influences (e.g. abnormal weather, industrial disputes).

**18** The state component series have been seasonally adjusted independently. Therefore, the adjusted components may not add to the Australian group totals.

**19** In this publication the seasonally adjusted estimates are produced by the concurrent seasonal adjustment method which takes account of the latest available original estimates. This method improves the estimation of seasonal factors and therefore, the seasonally adjusted and trend estimates for the current and previous quarters. As a result of this improvement, revisions to the seasonally adjusted and trend estimates will be observed for recent periods. In most instances the only noticeable revisions will be to the previous quarter and the same quarter one year ago. A more detailed review is conducted annually prior to the September quarter release, using data up to and including the June quarter. The concurrent seasonal adjustment methodology replaces the forward factor methodology used previously.

### TREND ESTIMATES

**20** A trend estimate is obtained by reducing the irregular component from the seasonally adjusted series. In this publication trend estimates are generally derived by applying a 7-term Henderson moving average to the seasonally adjusted series. The 7-term Henderson, (like all Henderson averages) is symmetric, but as the end of a time series is approached, asymmetric forms of the average are applied. Unlike the weights of the standard 7-term Henderson moving average, the weights employed here have been tailored to suit the particular characteristics of individual series. While the asymmetric weights enable the trend to be calculated for recent quarters, it does result in revisions to the estimates for the most recent three quarters as additional observations become available. Revisions of trend estimates will also occur with revisions to the original data and re-estimation of seasonal factors.

**21** Sensitivity analysis indicates the potential magnitude and direction of revisions created to the last three estimates. It aims to show how a specified movement in the seasonally adjusted data in the next period will affect the trend path of the time series. By showing how sensitive the trend estimates are to the addition of new data, the analysis provides information which can be used in the assessment of the trend's stability.

**22** For further information, see *Information Paper: A Guide to Interpreting Time Series – Monitoring 'Trends', an Overview* (cat. no. 1348.0) or contact the Assistant Director, Time Series Analysis on Canberra (02) 6252 6345.

## EXPLANATORY NOTES *continued*

---

### RELATED PUBLICATIONS

**23** Current publications and other products released by the ABS are listed in the *Catalogue of Publications and Products* (cat. no. 1101.0). The Catalogue is available from any ABS office or the ABS web site <<http://www.abs.gov.au>>. The ABS also issues a daily Release Advice on the web site which details products to be released in the week ahead.

### GENERAL ACKNOWLEDGMENT

**24** ABS publications draw extensively on information provided freely by individuals, businesses, governments and other organisations. Their continued cooperation is very much appreciated. Without it, the wide range of statistics published by the ABS would not be available. Information received by the ABS is treated in strict confidence as required by the *Census and Statistics Act 1905*.



## FOR MORE INFORMATION . . .

- INTERNET* **www.abs.gov.au** the ABS web site is the best place to start for access to summary data from our latest publications, information about the ABS, advice about upcoming releases, our catalogue, and Australia Now—a statistical profile.
- LIBRARY* A range of ABS publications is available from public and tertiary libraries Australia-wide. Contact your nearest library to determine whether it has the ABS statistics you require, or visit our web site for a list of libraries.
- CPI INFOLINE* For current and historical Consumer Price Index data, call 1902 981 074 (call cost 77c per minute).
- DIAL-A-STATISTIC* This service now provides only current Consumer Price Index statistics call 1900 986 400 (call cost 77c per minute).

## INFORMATION SERVICE

Data already published that can be provided within five minutes will be free of charge. Our information consultants can also help you to access the full range of ABS information—ABS user pays services can be tailored to your needs, time frame and budget. Publications may be purchased. Specialists are on hand to help you with analytical or methodological advice.

- PHONE* 1300 135 070
- EMAIL* client.services@abs.gov.au
- FAX* 1300 135 211
- POST* Client Services, ABS, GPO Box 796, Sydney NSW 2001

## WHY NOT SUBSCRIBE?

ABS subscription services provide regular, convenient and prompt deliveries of selected ABS publications and products as they are released. Email delivery of monthly and quarterly publications is available.

- PHONE* 1300 366 323
- EMAIL* subscriptions@abs.gov.au
- FAX* (03) 9615 7848
- POST* Subscription Services, ABS, GPO Box 2796Y, Melbourne Vic 3001



2721500012048

ISSN 0728 4047

RRP \$24.00